

You can use the Word Guide to be more precise with the word choice in your diagram or outline.

Select the word you want to look up.

To select a word in a topic, click and drag across the word to select it.



A. Hodja **tries** to make everyone happy.

To select a word in a symbol, double-click the symbol.

When you see the blinking cursor, click and drag across the word to select it.

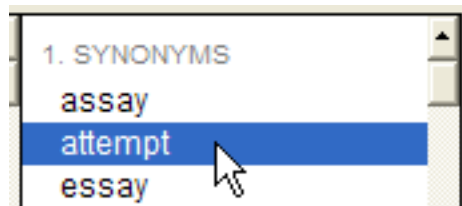


To select a word in a topic.

Click the Word Guide button on the Diagram toolbar.



You will see the Word Guide dialog.



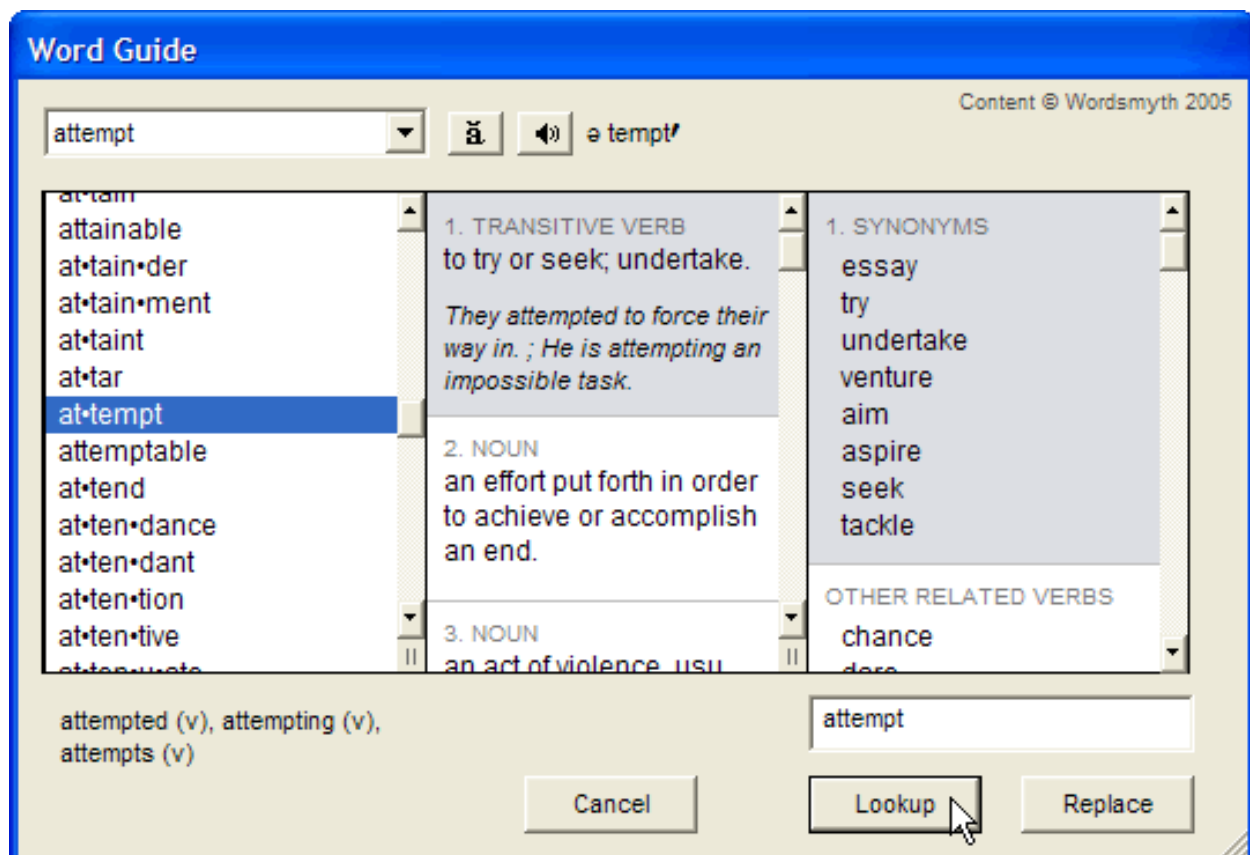
You will see definitions for the word in the middle column.

You will see synonyms and antonyms for the word in the column on the right.

Find the definition that matches the meaning you are trying to convey.

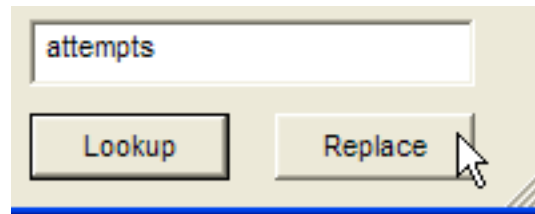
If you find a synonym in the list you would prefer to use, click it to select it.

Click the Lookup button to see a definition of that word.



Adjust the tense of the word in the field at the bottom.

Click the Replace button.



You will see the new word in your topic and symbol.



A. Hodja attempts|to make everyone happy.

© 2007. All Rights Reserved. This Material is copyrighted under United States copyright laws. Tech4Learning, Inc. is the exclusive owner of the copyright. Distribution of this material is governed by the Terms and Conditions of your license for the Recipes4Success. Unlicensed distribution is strictly forbidden.